

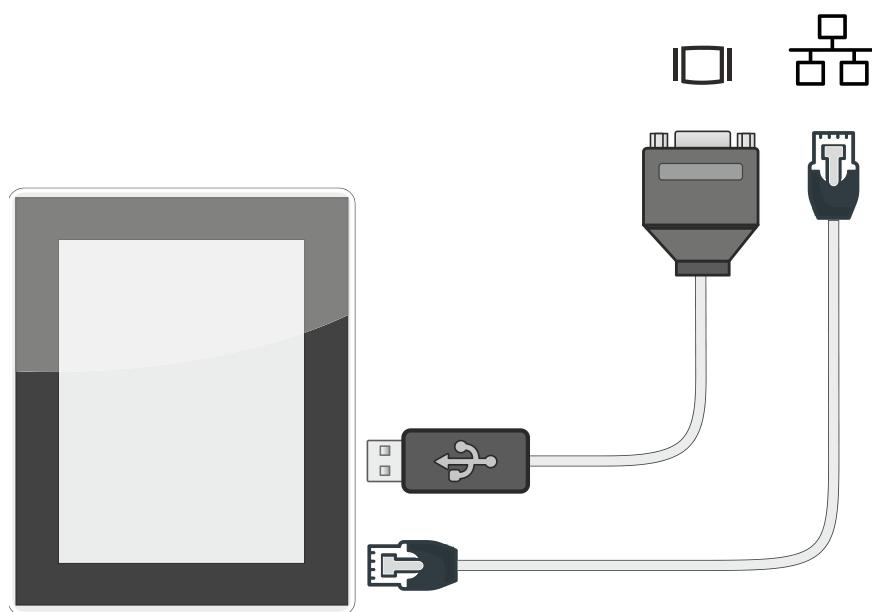


Technology for Vacuum
Systems

Interface description

INTERFACES VACUU-SELECT

Modbus TCP
RS-232



Instructions for use



Original instructions Keep for further use!

This manual is only to be used and distributed in its complete and original form. It is strictly the user's responsibility to carefully check the validity of this manual with respect to the product.

Manufacturer:

VACUUBRAND GMBH + CO KG
Alfred-Zippe-Str. 4
97877 Wertheim
GERMANY

Phone:

Head office: +49 9342 808-0

Sales: +49 9342 808-5550

Service: +49 9342 808-5660

Fax: +49 9342 808-5555

Email: info@vacuubrand.com

Web: www.vacuubrand.com

*Thank you for purchasing this product from **VACUUBRAND GMBH + CO KG**. You have chosen a modern and technically high quality product.*

TABLE OF CONTENTS

1	Introduction	5
1.1	Remote control and interfaces	5
1.2	VACUU-SELECT supported software version	6
1.3	Abbreviations	6
1.4	Target group description	6
2	Applications	9
2.1	Select application	9
2.2	Determine the application ID	9
2.3	List of applications	10
2.4	List of process steps	11
3	Modbus TCP	13
3.1	Modbus communication	13
3.1.1	Connection examples	13
3.1.2	Settings on the controller	14
3.1.3	Supported function codes	17
3.1.4	Defined data types	17
3.1.5	Representation/setting of pressure values	18
3.1.6	Representation/setting of special values	19
3.1.7	Process parameter deactivation	19
3.1.8	Start/end remote control	20
3.1.9	VACUU-SELECT lock screen	20
3.2	Modbus Register Mapping	21
3.2.1	Common Model	21
3.2.2	Control Model	22
3.2.3	Process Control Model	24
3.2.4	Process Step Control Model	25
3.2.5	Service Model	26
3.3	Sample application	27
4	RS-232 serial port	29
4.1	RS-232 communication	29
4.1.1	Connection example	29
4.1.2	Plug allocation (RS-232)	29
4.1.3	Settings on the controller	30
4.1.4	Representation/setting of special values	32
4.1.5	Process parameter deactivation	32
4.1.6	Start/end remote control	32
4.1.7	VACUU-SELECT lock screen	33
4.2	Interface commands	34
4.3	List of frequently used commands	35
4.3.1	Read commands	35
4.3.2	Write commands	35
4.4	List of all commands	36
4.4.1	Read commands	36
4.4.2	Write commands	39
4.5	Sample application	41
5	Index	44



1 Introduction

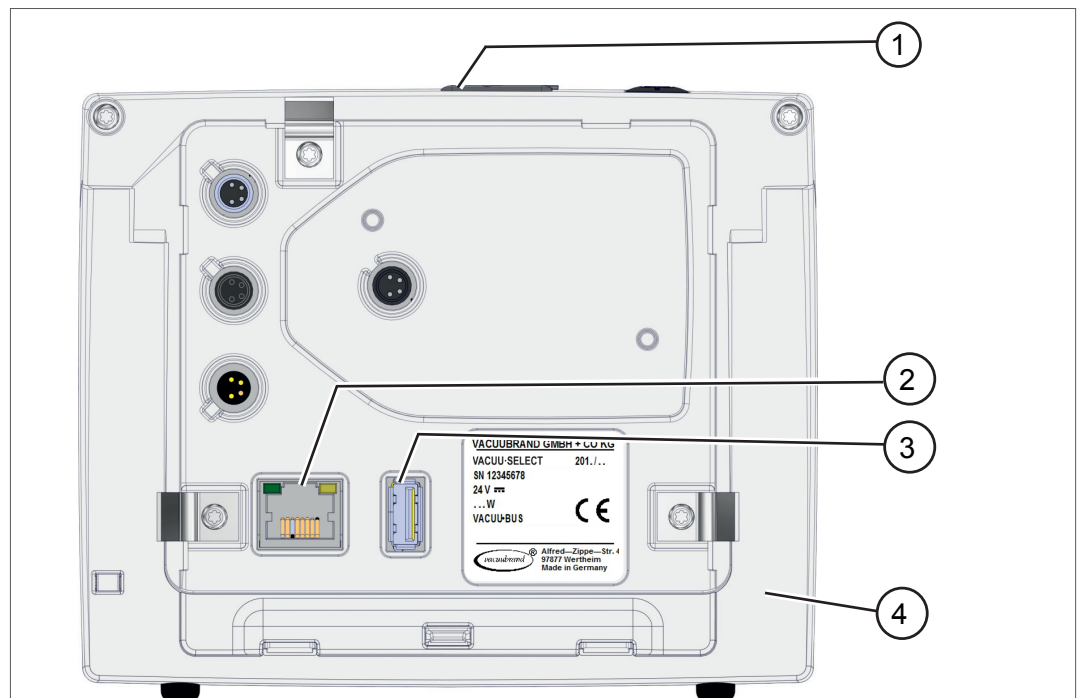
This document describes the general aspects of the communications protocols for Modbus TCP and the use of the serial port RS-232 with the VACUU·SELECT® vacuum controller.

1.1 Remote control and interfaces

As of software version V1.04 / V1.00 of the VACUU·SELECT®, communication is supported via RS-232 as well as Modbus TCP. This enables you to remotely monitor and control the controller from a central location, for example directly with a PC or via PLC in a process control system with a host computer.

VACUU·SELECT interfaces

Figure
VACUU·SELECT
interfaces



- | | |
|---|---|
| 1 | USB port, type A |
| 2 | RJ45 socket – LAN connection (Ethernet) |
| 3 | USB port, type A |
| 4 | Rear view of VACUU·SELECT® vacuum controller |

IMPORTANT!

The data link to the controller is not encrypted. The operator's IT must implement suitable measures to ensure network security.

1.2 VACUU-SELECT supported software version

Supported software
version

Version	Modbus TCP	RS-232
V1.00 / V1.00	---	---
V1.01 / V1.00	---	---
V1.02 / V1.00	---	---
V1.03 / V1.00	---	---
V1.04 / V1.00	x	x
V1.05 / V1.00 ... <i>or above</i>	x	x

To make use of remote access you require software version V1.04 / V1.00 or above.

⇒ If required, carry out a [software update](#) on the controller.

1.3 Abbreviations

Abbreviations

TCP	Transmission control protocol, Ethernet
RO	Read only
RW	Read / write
NA	No access
NaN	Not a number
ID	Identification number for applications or process steps
VS-C	Vacuum sensor for rough vacuum range = atmospheric pressure –1 mbar (atmospheric pressure –0.75 Torr); e.g., VACUU-SELECT sensor, VACUU-VIEW, VSK 3000
VS-P	Vacuum sensor for fine vacuum range = 1 mbar–0.001 mbar (0.75 Torr–0.00075 Torr); e.g., VACUU-VIEW extended, VSP 3000
---	---
s	Seconds
min	Minutes
h	Hours
---	---
e.g.	For example

1.4 Target group description

IMPORTANT!

It is the operator's responsibility to apportion tasks according to the areas of competence and relevant qualifications listed in the *Responsibility matrix*.

Personnel qualification

Meaning Personnel qualification

Laboratory technician	Laboratory staff with professional qualification in the use of laboratory equipment and knowledge of applications and processes, as well as possible effects of remote access.
Electrician	Person with professional qualification in electrics.
IT expert	System technician in charge of network engineering, network administration and measures for network security and maintenance on the operator's side.

Responsibility matrix

Responsibility matrix and areas of competence

Activity	Laboratory technician	Electrician	IT expert
Interface connection at controller	x	x	---
Connection to PLC	---	x	---
Connection to PC	x	x	x
Network data synchronization	x	---	x
Network configuration (systems integration of controller)	---	---	x
Implementation of IT specific measures for network security*	---	---	x
Remedy of network problems	---	---	x
Controller software update	x	---	---
Reconfiguration** following software update or loading factory settings	x	x	x
Data import/export. e.g., established applications	x	---	---
Data logger download	x	---	---
Troubleshooting	x	---	x
Operation	x	---	---
Advanced operation	x	---	---
Error report	x	x	x
Remedy	x	---	(x)
Remote control, responsibility for process security during remote access	x	---	---

* Data transfers with Modbus TCP or RS-232 are not encrypted.

** Network or interface settings

2 Applications

2.1 Select application

Select application via ID

Applications in the vacuum controller are labeled with an application identification number (application ID), also referred to as *Process Application ID*.

Using these defined application IDs, the required application can be selected via remote control, Modbus TCP or RS-232.



If the host computer issues a demand for applications that are not technically supported by the device, the transmitter receives a corresponding error message. This message can be processed into an appropriate message in the host computer.

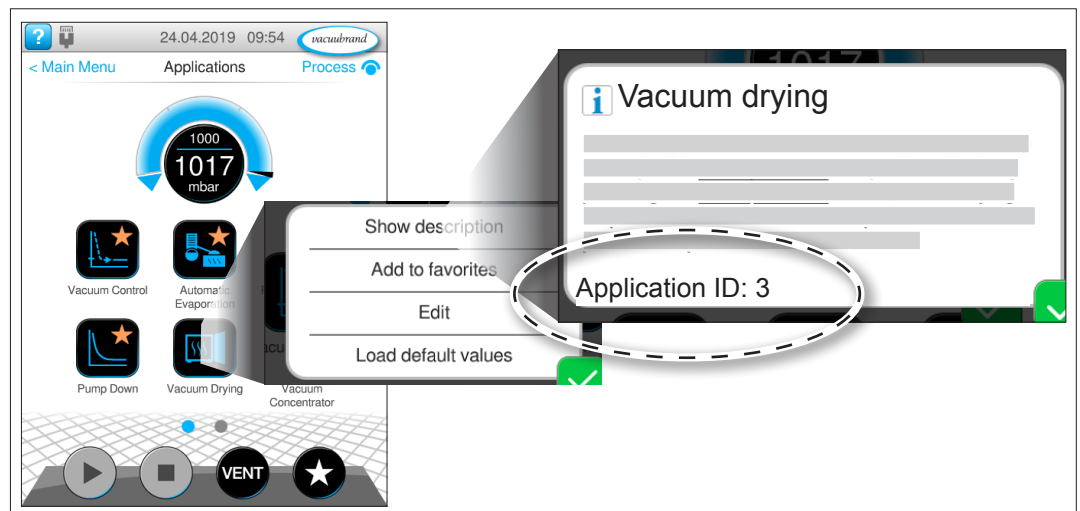
The same functions can be displayed via the interfaces as can locally on the controller.

2.2 Determine the application ID

VACUUBRAND standard applications are in the 0–99 ID range. When you create your own applications – e.g., a new application in the editor – or import an existing application they are automatically assigned a free ID from 100 upwards. Conversely, this means that the ID of an own application must be known for it to be available for selection via remote control.

Main menu / Applications / Context menu: Show description

→ Example
Show application ID on the display



2.3 List of applications

Default process application ID

Application IDs
Standard applications



ID	Standard application	2-point VS-C	2-point VS-P	VARIO VS-C	VARIO VS-P
0	Pump down	x	x	x	x
1	Automatic evaporation	---	---	x	x
2	Application example 1 (automatic evaporation)	---	---	x	x
3	Vacuum drying	x	x	x	x
4	Pump down and hold	x	x	x	x
5	Filtration	x	---	x	---
6	Vacuum control	x	x	x	x
7	Turbo backing pump	---	---	x	x
8	Vacuum concentrator	x	---	x	---
9	Gel drying	x	---	x	---
10	Freeze drying	---	x	---	x
11	Schlenk line	---	x	---	x
12	VACUU-LAN	x*	x*	x	x
13	Boiling point detection	x	x	---	---
14	Application example 1 (boiling point detection)	x	x	---	---
...	...				

* Only with VMS-B module

The standard applications in the controller are the same on every controller and are counted from application ID 0. Depending on the component configuration certain applications may not be available (see columns in the table).

My process application ID

→ Example
Application IDs
Own applications



ID	Standard application	2-point VS-C	2-point VS-P	VARIO VS-C	VARIO VS-P
100	Example: Pump down 60 %	x	x	x	x
101	Example: Pump down and hold 5 min	x	x	x	x
...	...				

Your own applications created in the controller editor are automatically counted from ID number 100 → see also chapter: **2.2 Determine the application ID.**

2.4 List of process steps

Process steps in the vacuum controller are labeled with a process step identification number, also referred to as the *Process Step ID*.

All standard applications and specifically created applications use process steps from a pre-defined set of steps. Each process step consists of elementary and optional parameters. Elementary parameters must mandatorily be assigned a value, while optional parameters can be deactivated selectively.

Process step ID

Process step IDs

ID	Designation	Pressure setpoint	Set speed/ max. speed	Hysteresis/ switch-on pressure	Minimum/ maximum	Duration/ delay time
0	Pump down	---	x	---	(x)	(x)
1	Vacuum control	x	x	x	(x)	(x)
2	Ramp	x	---	x	---	x
3	Vent	x	---	---	---	(x)
4	Hold vacuum	x	x	x	(x)	(x)
5	Automatic boiling point function	---	---	---	(x)	(x)
6	Boiling point recognition	---	---	---	---	(x)
7	Loop	---	---	---	(x)	(x)
8	Turbo backing pump	---	---	---	---	(x)
9	VACUU·LAN	x	---	x	---	x

x = Elementary parameter

(x) = Optional parameter

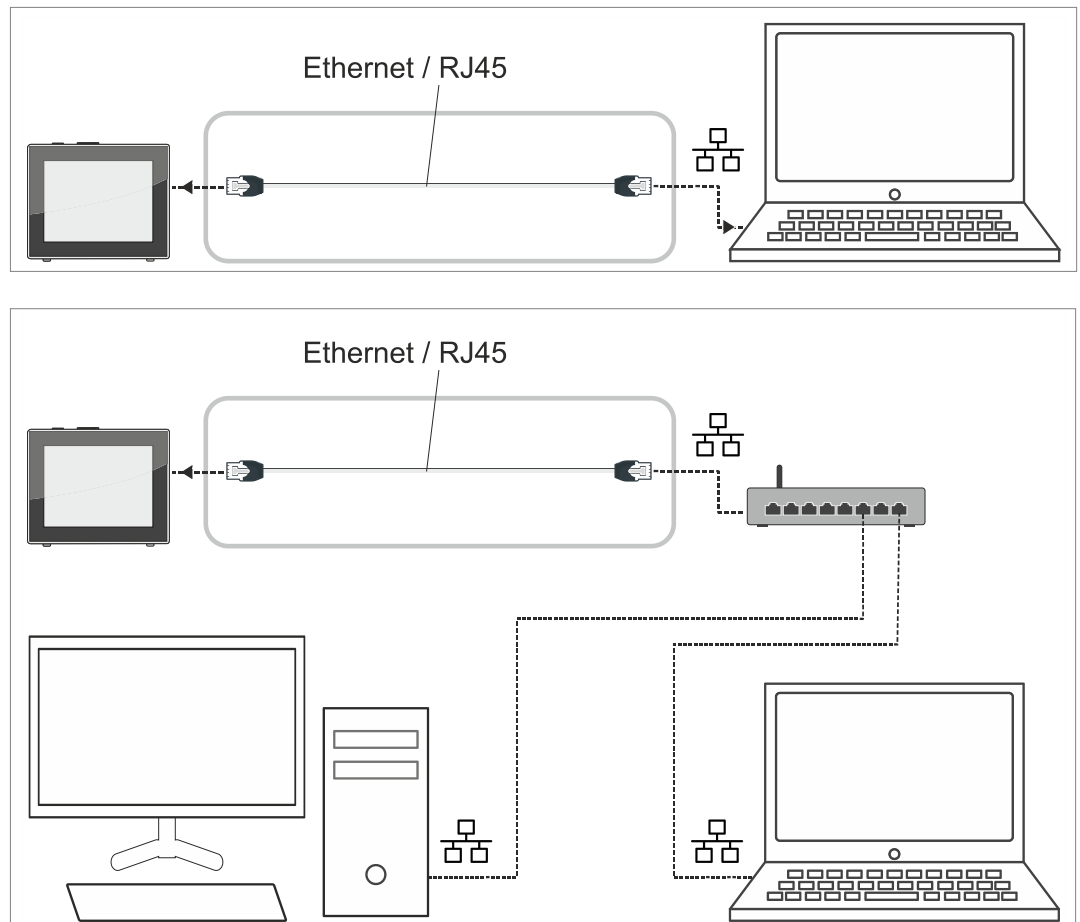
3 Modbus TCP

For remote control via Modbus TCP, use the Ethernet connection RJ45 on the back of the controller.

3.1 Modbus communication

3.1.1 Connection examples

→ Examples
Ethernet connection



3.1.2 Settings on the controller

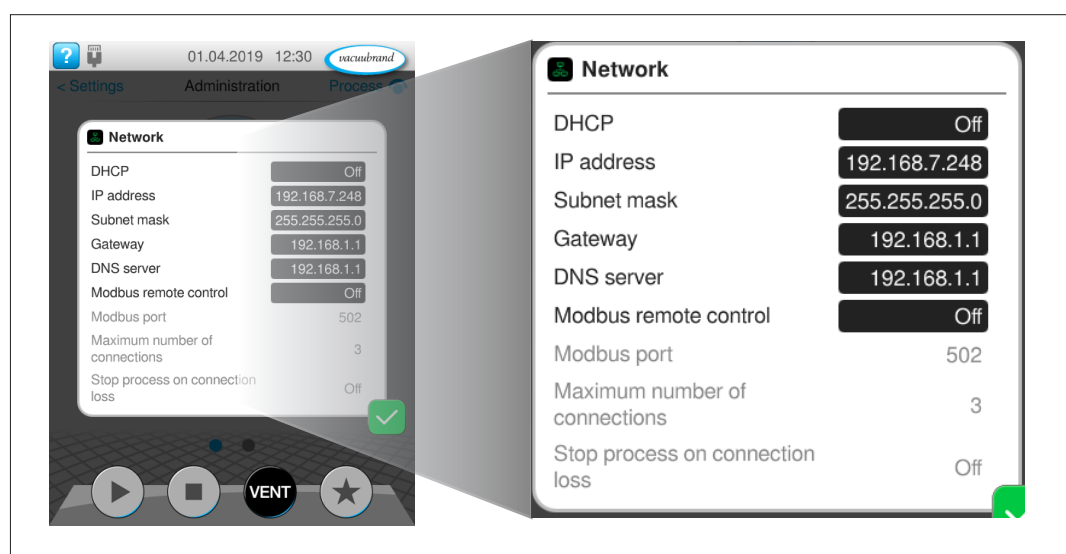
General network/IP settings

General network/IP
settings

In order to use Modbus TCP on the VACUU·SELECT, various basic settings must be carried out first.

All relevant settings are summarized in the **Network** context menu and can be found in the controller as follows: *Process screen / Main menu / Settings / Administration / Network*

Network context menu screen



- ⇒ Synchronize the data with your required network settings.
- ⇒ Tap on one of the black input fields to adjust the data; consult your IT department if required.

The VACUU·SELECT can subsequently be reached via the set IP address. If an automatic configuration of the parameters via DHCP is selected, the assigned IP data can be viewed here. In addition, a cable connection to a network is shown by means of a symbol in the status bar (see illustration).

IMPORTANT!

If the controller is reset to the factory settings, the data in this menu must be synchronized again.

Modbus TCP default settings

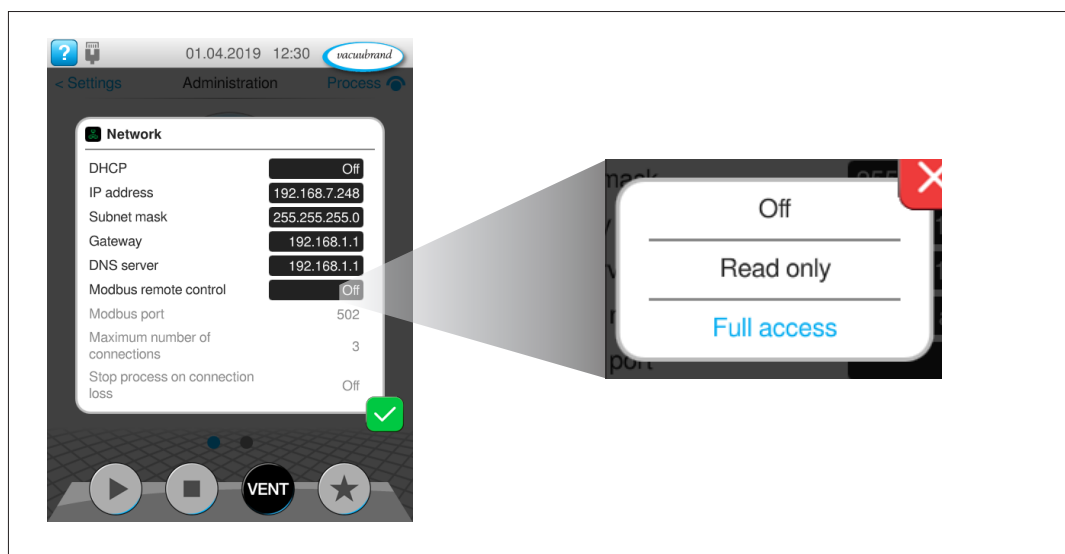
Modbus TCP default settings

The settings relevant for Modbus TCP can be found at the end of the **Network** context menu:

- Modbus remote control (default: Off)
- Modbus port (default: 502)
- Maximum number of connections (default: 3)
- Stop process on connection loss (default: Off)

Settings Modbus remote control

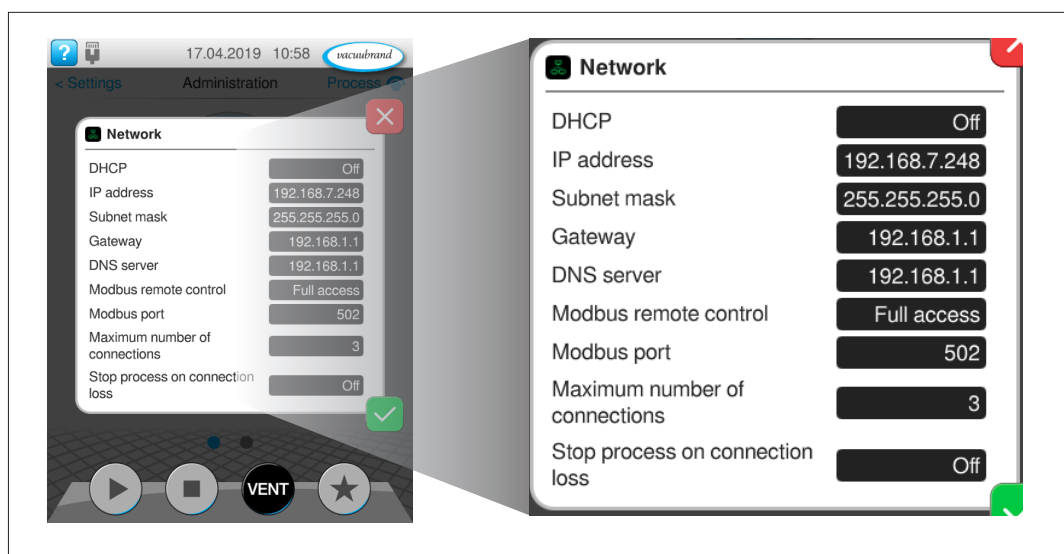
Settings Modbus remote control



Two fundamental types of access are available when using Modbus TCP: **Read only access** or **Full access**. If the aim for example is simply to read out measured values and parameters from the controller for report purposes, with no active remote control permissible, we recommend selecting the **Read only** setting.

Modbus remote control full access/read only

→ Example
Modbus remote control
with full access



Up to three parallel TCP connections to the VACUU-SELECT are supported as standard. This number can be limited by means of a setting. If the previously set **Maximum number of connections** has been reached, each additional connection attempt is rejected by the controller. A new subscriber can only connect to the VACUU-SELECT when one of the existing connections has been closed.

The option for **Stop process on connection loss** allows the behavior of the VACUU-SELECT in the event of an uncontrolled loss of the controlling connection (connection closed or timeout) to be defined. If this option is activated, the controller automatically stops a running process when an uncontrolled interruption to remote control has occurred.

3.1.3 Supported function codes

Supported
function codes

Code	Description
03 (0x03)	Read Holding Registers For reading single or multiple successive register values.
06 (0x06)	Write Single Holding Register Exclusively for writing single register values (data types int16, uint16, enum16 or sf). If several registers are merged into a larger data type (e.g., int32, uint32 or string), function code 16 must be used for writing. Overview of supported data types → <i>see chapter 3.1.4 Defined data types</i> .
16 (0x10)	Write Multiple Holding Registers For writing multiple successive registers that are merged into a larger data type or which require consistent adjustment → <i>see chapter 3.1.5 Representation/setting of pressure values</i> .

3.1.4 Defined data types

The available Modbus registers described in chapter **3.2 Modbus Register Mapping** are based on the data types listed below. If certain functions are not supported by the controller, the associated Modbus registers are assigned the relevant NaN values.

Each individual 16-bit register is represented in little endian byte order. For 32-bit data types consisting of two 16-bit registers, the lower register address represents the least significant part of the entire data type.

Data types composed of more than one Modbus register must be written with function code 16 → *see chapter 3.1.3 Supported function codes*.

Modbus data types and
NaN values

Type	Description	NaN Value
int16	Signed integer value (16 bit)	0x8000
int32	Signed integer value (32 bit)	0x80000000
uint16	Unsigned integer value (16 bit)	0xFFFF
uint32	Unsigned integer value (32 bit)	0xFFFFFFFF
float32	Floating-point, simple accuracy, IEEE-754 (32 bit)	0xFFFFFFFF
enum16	Number code (16 bit). The breakdown of the possible codes can be found directly under the designation of the according Modbus register.	0xFFFF
string	String (multiple of 2 bytes). A zero-terminating value or a value of fixed length.	0x0000
p	Representation of pressure values as a floating-point number or by means of integers; for more information → <i>see chapter 3.1.5 Representation/setting of pressure values</i> .	<i>see 3.1.5</i>

3.1.5 Representation/setting of pressure values

Representation/setting
of pressure values

Pressure values, such as set and actual pressures, can be represented either with floating point arithmetic or with integer values → *see Modbus register #40812*. In the data models → *see chapter 3.2 Modbus Register Mapping*, a pressure value always occupies three Modbus registers, which are assigned differently depending on the selected representation. It is therefore only possible to change pressure values with function code 16 → *see chapter 3.1.3 Supported function codes*.

Integer representation (factory setting)

Integer representation
(factory setting)

The values are represented with a mantissa (uint32) and a signed exponent (int16). A pressure value is obtained with the following calculation formula:

Pressure value = mantissa * 10^{exponent}

Examples: 123 * 10⁻³ = 0.123 mbar
 500 * 10⁰ = 500 mbar

Register	Assignment	Data type
0	Mantissa	uint32
1		
2	Exponent	int16

Floating-point representation

Floating-point
representation

The value is represented as float32. Only two of the three registers are used in this version. Read and write commands must be executed accordingly on the first two registers.

Register	Assignment	Data type
0	Pressure value	float32
1		
2	---	---

3.1.6 Representation/setting of special values

Representation/setting
of special values

As well as the value ranges and NaN values described in chapter 3.1.4 *Defined data types*, the following special values are additionally defined below for parameters of data type p (= pressure values), provided they are supported by the relevant process step → see chapter 2.4 *List of process steps*.

AUTO setting for parameter Hysteresis

Register	Integer value	Floating-point value
0	0xFFFFFFFFE	0xC0000000
1		
2	0x0000	0x8000

ATM setting for parameter Pressure setpoint

Register	Integer value	Floating-point value
0	0xFFFFFFFFD	0xC0400000
1		
2	0x0000	0x8000

3.1.7 Process parameter deactivation

Process parameter
deactivation

Provided the respective parameter of a process step supports deactivation, e.g., the parameter *Duration* in the process step *Pump down*, deactivation can be achieved by writing the register value 0.

If a pressure parameter is to be deactivated, e.g., parameter *Minimum* in the process step *Pump down*, it may be necessary to write several registers → see chapter 3.1.5 *Representation/setting of pressure values*.

A deactivated parameter subsequently has no influence on the controller or the process sequence → see chapter 2.4 *List of process steps*.

3.1.8 Start/end remote control

Start/end remote control

If settings or process parameters are to be changed on the VACUU·SELECT, remote control must be started first. Although several parallel connections to the device are possible in principle, only one connection can exclusively take on remote control of the device and thereby also block local operation.

Provided no remote control is active yet – including via RS-232 – remote control can be established via Modbus register #40802 → *see chapter 3.2.2 Control Model*. For this, various modes are available which either completely block local operation, or at the least permit the connection to be terminated by activating the ON/OFF button on site. It is also possible to specify which screen is displayed in the locked state (*Process screen* or *Pressure graph*).

3.1.9 VACUU·SELECT lock screen

During remote operation via Modbus TCP the display of the VACUU·SELECT is shown locked.

Locked screen

→ Example
Locked controller



When remote control is active, the device display always jumps to the *Process screen*. Alternatively, the display can also jump to the *Pressure graph* screen.

The locked screen is shown as long as remote control is active.

3.2 Modbus Register Mapping

3.2.1 Common Model

Address	Size	Name	Data Type	Description	Access
40000	4	VACUUBUS_ID	string(8)	VACUU·BUS Modbus identifier. Uniquely identifies this as a VACUU·BUS Modbus Register Map. Fixed value = "VACUUBUS" (0x5641435555425553)	RO
40004	1	VACUUBUS_MID	uint16	VACUU·BUS Modbus Model Block identifier. Uniquely identifies this as a VACUU·BUS Modbus Common Model Block. Fixed value = 0x0001	RO
40005	1	VACUUBUS_Length	uint16	Length of block in 16 Bit registers. Value = 18	RO
40006	1	Protocol Version	uint16	VACUU·BUS Modbus Protocol Version	RO
40007	1	Device Address	uint16	Unique device address or Modbus Unit ID	RO
40008	1	Manufacturer ID	enum16	Device manufacturer ID. Possible values: 1 = VACUUBRAND GMBH + CO KG	RO
40009	1	Product ID	enum16	Product ID. Possible values: 1 = VACUU·SELECT	RO
40010	10	Serial Number	string(20)	Device serial number	RO
40020	1	Software Version #1	uint16	Device software version The device's software represented as an according integer value. Examples: V1.00 = 0x0064 V2.34 = 0x00EA	RO
40021	1	Hardware Version #1	uint16	Device hardware version The MSByte points to a character of the alphabet, representing the board layout revision. The LSByte represents the assembly version. Examples: A.01 = 0x0101 D.12 = 0x040C	RO
40022	1	Software Version #2	uint16	See description of 40020	RO
40023	1	Hardware Version #2	uint16	See description of 40021	RO

3.2.2 Control Model

Address	Size	Name	Data Type	Description	Access
40800	1	VACUUBUS_MID	uint16	VACUU·BUS Modbus Model Block identifier. Uniquely identifies this as a Control Model Block. Value = 0x0009.	RO
40801	1	VACUUBUS_Length	uint16	Length of block in 16 Bit registers. Value = 9	RO
40802	1	Remote Control Mode	enum16	Remote control mode. Possible values: 0 = Remote off 1 = Remote on, Process screen A ¹⁾ 2 = Remote on, Process screen A ²⁾ 3 = Remote on, Chart view screen A ¹⁾ 4 = Remote on, Chart view screen A ²⁾ 5 = Remote on, Process screen B ^{1) 3)} 6 = Remote on, Process screen B ^{2) 3)} 7 = Remote on, Chart view screen B ^{1) 3)} 8 = Remote on, Chart view screen B ^{2) 3)}	RW
40803	2	Operating Status	uint32	Information on the system's current operating status. This bitfield contains the following data: Bit 0 = Sensor overpressure (warning) Bit 1 = Sensor underrange (warning) Bit 2 = Sensor failure Bit 3 = Liquid level sensor triggered Bit 4 = Inlet valve failure Bit 5 = Vent valve failure Bit 6 = Water valve failure Bit 7 = Pump/VMS-B failure Bit 8 = VARIO pump failure Bit 9 = Digital I/O module failure Bit 10 = Analog I/O module failure Bit 11 = EK Peltronic failure Bit 12:31 = Reserved for future use By writing zero, all pending failures/warnings will be acknowledged	RW
40805	1	Pressure Unit	enum16	Pressure unit. Possible values: 0 = mbar 1 = Torr 2 = hPa	RW
40806	1	Autostart Mode	enum16	Autostart mode. Possible values: 0 = Autostart disabled 1 = Autostart enabled	RW
40807	1	Vent Valve in Vacuum Control Mode	enum16	Vent valve in vacuum control mode. Possible values: 0 = Vent valve disabled 1 = Vent valve enabled on setpoint change	RW

40808	2	Delay Time of Coolant Valves	uint32	Delay time of coolant valves [s]	RW
40810	2	Delay Time of Liquid Level Sensors	uint32	Delay time of liquid level sensors [s]	RW
40812	1	Data Type of Pressure Values	enum16	Pressure value data type → see chapter 3.1.5 Representation/setting of pressure values Possible values: 0 = Integer (mantissa + exponent) 1 = Floating point	RW

1) Device locked

2) Unlocking by ON/OFF button possible

3) Only available on SYNCHRO pumping units

3.2.3 Process Control Model

Address	Size	Name	Data Type	Description	Access
40900	1	VACUUBUS_MID	uint16	VACUUBUS Modbus Model Block identifier. Uniquely identifies this as a Process Control Model Block. Fixed value = 0x000A (Primary) or 0x000B (Secondary)	RO
40901	1	VACUUBUS_Length	uint16	Length of block in 16 Bit registers. Value = 13	RO
40902	1	Process Application ID	uint16	Selected application's ID → <i>see chapter: 2.2 Determine the application ID</i>	RW
40903	1	Process Run Mode	enum16	Process run mode. Possible values: 0 = STOP 1 = START	RW
40904	1	Control Vent Valve	enum16	Control the process' vent valve(s). Possible values: 0 = Close 1 = Open 2 = Vent to atmospheric pressure and close automatically	RW
40905	1	Temporary Vent Valve in Vacuum Control Mode	enum16	Vent valve in vacuum control mode. This temporarily overwrites the basic settings until process stop (see 40807). Possible values: 0 = Vent valve disabled 1 = Vent valve enabled on setpoint change 2 = Vent valve enabled for vacuum control	RW
40906	1	Current Process Step	uint16	Currently active process step [1..n]. Jumping to next process step by writing the next process step's index	RW
40907	1	Number Of Process Steps	uint16	Number of steps in the selected process	RO
40908	1	Process Step Jump Enable	enum16	Possibility to jump to the next process step. Possible values: 0 = Jumping disabled 1 = Jumping enabled	RO
40909	2	Process Time Elapsed	uint32	Process time elapsed [s]	RO
40911	1	Process Vacuum Type	enum16	Process vacuum type. Possible values: 0 = Rough vacuum 1 = Fine vacuum	RO
40912	3	Sensor Value	p	Actual pressure [mbar/Torr/hPa] → <i>see chapter: 3.1.5 Representation/setting of pressure values</i>	RO

3.2.4 Process Step Control Model

Address	Size	Name	Data Type	Description	Access
41100	1	VACUUBUS_MID	uint16	VACUUBUS Modbus Model Block identifier. Uniquely identifies this as a Process Step Control Model Block. Fixed value = 0x000C (Primary) or 0x000D (Secondary).	RO
41101	1	VACUUBUS_Length	uint16	Length of block in 16 Bit registers. Value = 14	RO
41102	1	Process Step Selector	uint16	Select a specific process step to set/get parameters. Possible values: 0 = Active process step 1..n = Specific process step	RW
41103	1	Process Step ID	enum16	Unique process step ID. Possible values → <i>see chapter: 2.4 List of process steps</i>	RO
41104	3	Set-pressure Value	p	Set-pressure value [mbar/Torr/hPa]	RW
41107	1	Set-speed Value	uint16	Set-speed value VARIO pumps [%]	RW
41108	2	Duration	uint32	Duration of the process step [s]	RW
41110	3	Hysteresis Value	p	Hysteresis value [mbar/Torr/hPa]	RW
41113	3	Minimum/Maximum Value	p	Minimum/Maximum value [mbar/Torr/hPa]	RW

3.2.5 Service Model

Address	Size	Name	Data Type	Description	Access
41300	1	VACUUBUS_MID	uint16	VACUUBUS Modbus Model Block identifier. Uniquely identifies this as a Service Model Block. Fixed value = 0x000E.	RO
41301	1	VACUUBUS_Length	uint16	Length of block in 16 Bit registers. Value = 11	RO
41302	2	Controller Operating Time	uint32	Controller Operating time [min]	RO
41304	2	VARIO Pump Operating Time	uint32	VARIO pump Operating time [min]	RO
41306	1	VARIO Pump Service Monitoring Enable	enum16	VARIO pump service assistant enable mode. Possible values: 0 = Service assistant disabled 1 = Service assistant enabled	RO
41307	2	VARIO Pump Last Service Time	uint32	VARIO pump last time serviced [min]	RO
41309	1	VARIO Pump Service Interval	uint16	VARIO pump service interval [h]	RO
41310	1	VARIO Pump Service Threshold	uint16	VARIO pump service threshold [%]	RO

3.3 Sample application

Vacuum control

The following sequence shows vacuum control to a pressure setpoint of 12.3 mbar, by way of example.

Activate remote control

Address	Value	Description
40802	1	Remote Control Mode Activate remote control, device locally locked, jump to <i>Process screen</i>
<i>or</i>		
40802	2	Remote Control Mode Activate remote control, device can be locally unlocked, jump to <i>Process screen</i>
<i>or</i>		
40802	3	Remote Control Mode Activate remote control, device locally locked, jump to <i>Pressure graph</i>

Select "vacuum control" application (ID=6)

Address	Value	Description
40902	6	Process application ID

Specify pressure setpoint

Address	Value	Description
41104	123	Set pressure value (mantissa)
41106	-1	Set pressure value (exponent)

Start process

Address	Value	Description
40903	1	Process run mode

Stop process

Address	Value	Description
40903	0	Process run mode

Deactivate remote control

Address	Value	Description
40802	0	Remote control mode

While the process is running, the following Modbus registers can for example serve to monitor the process flow:

Address		Description
40909		Process time elapsed [s]
40912		Sensor value (mantissa)
40914		Sensor value (exponent)

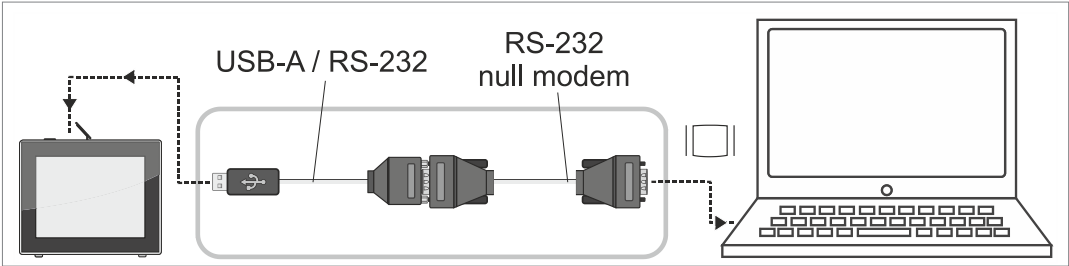
4 RS-232 serial port

Point-to-point communication to a serial device can be established from the controller via a USB adapter. In order to use the functions via RS-232, a USB adapter/RS-232 and null modem cable must be connected to one of the USB ports of the controller.

4.1 RS-232 communication

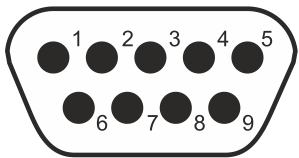
4.1.1 Connection example

→ Example
RS-232 connection



Adapter cable, USB to RS-232, 1 m	20637838
RS-232C null modem cable, 2x socket Sub-D 9-pin, 1.5 m	20637837

4.1.2 Plug allocation (RS-232)



Sub-D 9-pin

PIN	Designation	Function
1	DCD (Data Carrier Detect)	Signal received detector
2	RXD (Receive Data)	Received data
3	TXD (Transmit Data)	Transmission data
4	DTR (Data Terminal Ready)	Terminal device ready for operation
5	GND (Ground)	System ground
6	DSR (Data Set Ready)	Standby
7	RTS (Request To Send)	Switch on transmitting part
8	CTS (Clear To Send)	Ready to send
9	RI (Ring Indicator)	Incoming call

→ see also datasheet included in the adapter cable delivery

4.1.3 Settings on the controller

General communication settings

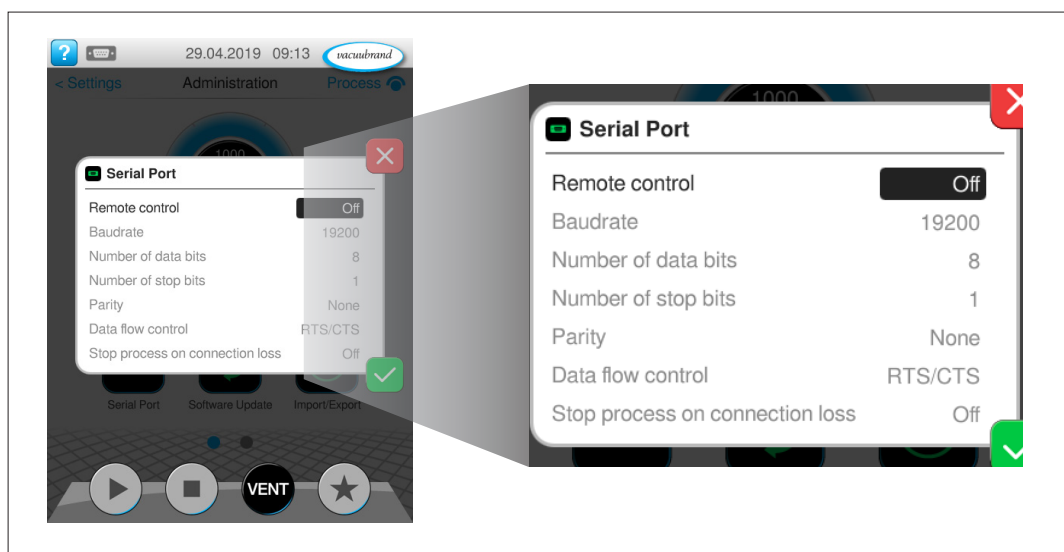
General communication settings

In order to use RS-232 on the VACUU·SELECT, various basic settings must be carried out first.

All relevant settings are summarized in the **Serial port** context menu and can be found in the controller as follows: *Process screen / Main menu / Settings / Administration / Serial port*

Serial port context menu screen

→ Example
Serial port context menu

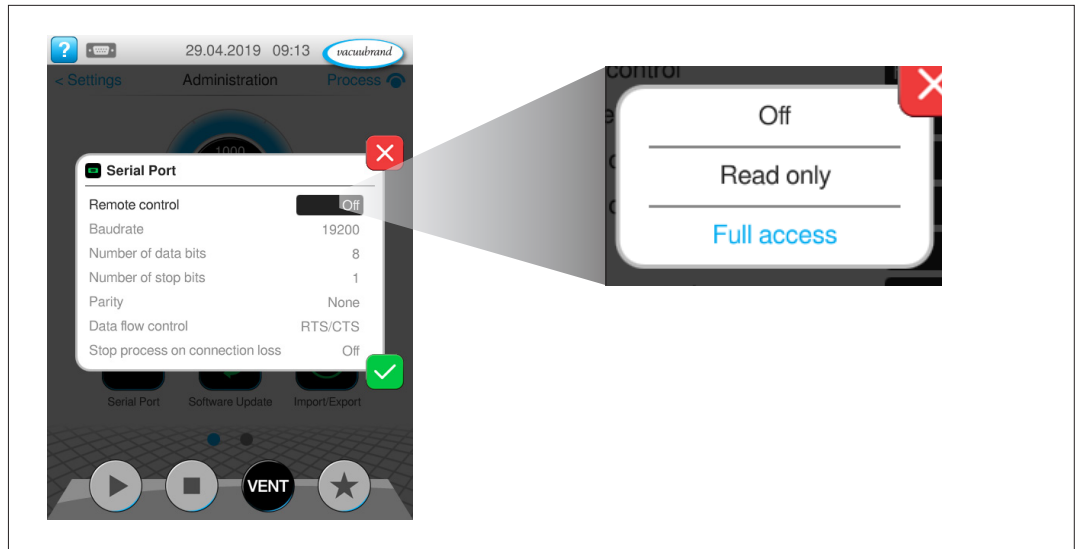


RS-232 default settings

- Remote control (default: Off)
- Baudrate (default: 19200)
- Number of data bits (default: 8)
- Number of stop bits (default: 1)
- Parity (default: None)
- Data flow control (default: RTS/CTS)
- Stop process on connection loss (default: Off)

RS-232 remote control settings

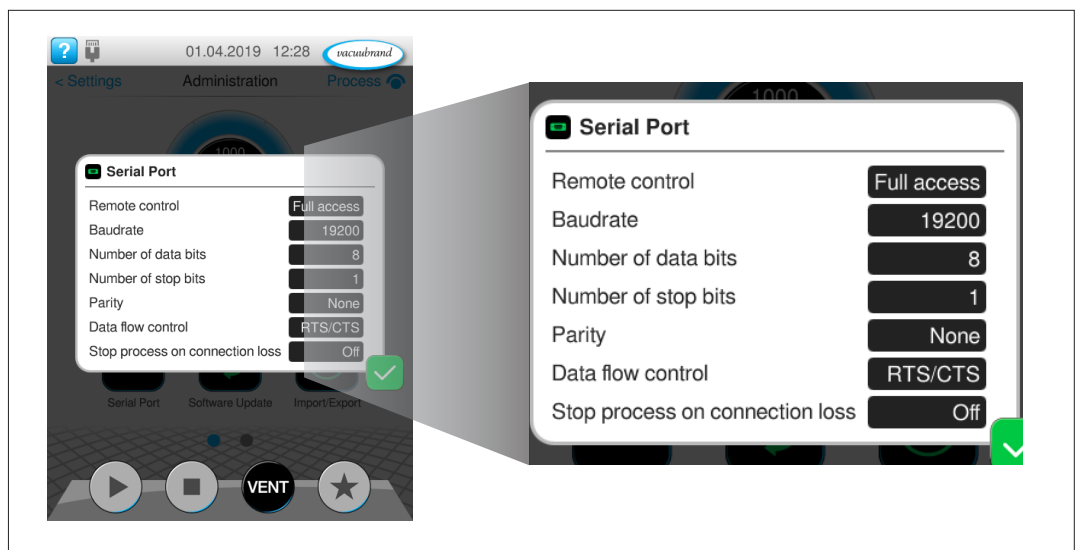
→ Example
Serial port settings



Two fundamental types of access are available when using RS-232: **Read only** access or **Full access**. If the aim for example is simply to read out measured values and parameters from the controller for report purposes, with no active remote control permissible, we recommend selecting the **Read only** setting.

Serial port full access/read only

→ Example
Serial port with full
access



- ⇒ Synchronize the data with your required communication settings.
- ⇒ Tap on one of the black input fields to adjust the data.

IMPORTANT!

If the controller is reset to the factory settings, the data in this menu must be synchronized again.

4.1.4 Representation/setting of special values

Representation/setting
of special values

In addition to decimal values, various special values are also defined and can be used with certain interface commands (e.g., **OUT_SP_1**) or process parameters:

- Parameter hysteresis **AUTO**
- Parameter pressure setpoint **ATM**

4.1.5 Process parameter deactivation

Process parameter
deactivation

Provided the respective parameter of a process step supports deactivation → *see chapter 2.4 List of process steps*, deactivation can be achieved by writing the value 0. A deactivated parameter subsequently has no influence on the controller and/or the process sequence. (e.g., the parameter *Duration* in the process step *Pump down*) → *see chapter 2.4 List of process steps*.

4.1.6 Start/end remote control

Start/end remote control

If settings or process parameters are to be changed on the VACUU-SELECT, remote control must be started first. Provided no remote control is active yet (not via Modbus TCP either), remote control can be established via the interface command **REMOTE**.

For this, various modes are available which either completely block local operation, or at the least permit the connection to be terminated by activating the ON/OFF button on site. It is also possible to specify which screen is displayed in the locked state (*Process screen* or *Pressure graph*).

4.1.7 VACUU-SELECT lock screen

During remote operation via serial port, the display of the VACUU-SELECT is shown locked.

Locked screen

→ Example
Locked controller



When remote control is active, the device display always jumps to the *Process screen*. Alternatively, the display can also jump to the *Pressure graph* screen. The locked screen is shown as long as remote control is active.

4.2 Interface commands

Interface commands

The command set is based on NAMUR recommendations and is compatible with the precursor models CVC 2000 and CVC 3000. All interface commands are written in capitals throughout and end with the respective control characters **<CR>** (Carriage Return), **<LF>** (Line Feed) or both combined **<CR><LF>**. Value entries or parameters are separated from the command by a space character and can flexibly be shortened to the relevant digits (e.g., 5, 05, 005, 0005 are identical for pressure specifications). The response format is dictated by the selected communication mode.

Basically, three different communication modes are available (see command **CVC**), which dictate the interpretation of value entries and the response format of the individual commands. In this respect, the VACUU-SELECT factory settings match the factory settings of the CVC 3000 and are compatible with the command set of the CVC 2000. Control programs for the CVC 2000 or CVC 3000 can therefore communicate with the VACUU-SELECT without any changes. For full functionality we recommend switching to the VACUU-SELECT communication mode.

Interface commands that don't exist in the CVC 2000 or CVC 3000 command sets (e.g., **IN_APP** or **OUT_APP**) will also work without explicit changeover of the communication mode.

Write commands are only possible when remote control is active → *see chapter 4.1.6 Start/end remote control* and do not provide a response if the factory settings are in place. Whether a command was correctly implemented can be ascertained via a separate read command (see command **IN_ERR**). Use the **ECHO** command to activate an automatic response. If a command was correctly processed, a corresponding reply is delivered in return. The write commands **REMOTE**, **ECHO** and **CVC** are always possible and don't require active remote control.

IMPORTANT!

All settings adjusted by means of write commands are permanently saved by the controller.

To ensure reliable device operation, a pause time of at least 100 milliseconds must be observed between two consecutive commands. Individual write commands, such as selecting an application for example, require a longer pause time for the command to be fully implemented.

4.3 List of frequently used commands

4.3.1 Read commands

Command	Response by selected communication mode			Description
	CVC 2000	CVC 3000	VACUU-SELECT	
IN_PV_1 ¹⁾	XXXX mbar/hPa/Torr	XXXX.X mbar/hPa/Torr		Current sensor pressure value
	X.XXEXX mbar/hPa/Torr (on VS-P sensors)			

4.3.2 Write commands

Command	Parameter	Description
OUT_SP_1y ^{1),3),4)}	XXXX or XXXX.X X.XXEXX (on VS-P sensors)	Change the set-pressure of process step y without use the vent valve for vacuum control
OUT_SP_Xy ^{1),3),4)}		Change the set-pressure of process step y with one-time ventilation to the new set pressure, if necessary
OUT_SP_2y ³⁾	XX.X XXX	Change maximum pump speed of process step y. Values given in Hz (Communication mode CVC 2000) or % (CVC 3000 or VACUU-SELECT)
REMOTE	0 1 1y 2 2y	Exit remote control Enable remote control. Local operation disabled and process screen active. Optional parameter y: 0: Go to process screen 1: Go to chart view screen Enable remote control. Local operation disabled, but exit is possible by ON/OFF button. Optional parameter y: 0: Go to process screen 1: Go to chart view screen
START	<i>no parameters</i> or 1	Start process
STOP	<i>no parameters</i> or 0 1	Stop process and acknowledge failures/warnings Stop process
ECHO	0 1	Disable Echo Enable Echo. Write commands will be responded
CVC	2 3 4	Communication mode CVC 2000 Communication mode CVC 3000 Communication mode VACUU-SELECT

1) Values according to the device's pressure unit presetting.

2) Parameter y is optional. If y is not specified, the parameter value from the current process step of the selected application is used. If no application was started, the parameter from the first process step is read.

3) Parameter y is optional. If y is not specified, the parameter value is applied to the current process step of the selected application.

4) The basic settings regarding the use of the vent valve become temporary (until the end of the process) overwritten.

5) Any running process is stopped when the command is executed.

4.4 List of all commands

4.4.1 Read commands

Command	Response by selected communication mode			Description
	CVC 2000	CVC 3000	VACUU-SELECT	
IN_PV_1 ¹⁾	XXXX mbar/hPa/Torr	XXXX.X mbar/hPa/Torr		Current sensor pressure value
	X.XXEXX mbar/hPa/Torr (on VS-P sensors)			
IN_PV_Sy ¹⁾	XXXX.X mbar/hPa/Torr (X.XXEXX on VS-P sensors)			Current pressure value of sensor y Order of numbering as shown in chart view screen
IN_PV_2	XX.X Hz	XXX %		Current pump speed
IN_PV_3	XX:XX h:m		XX:XX:XX h:m:s	Process time elapsed
IN_PV_31	XX:XX:XX			Process time elapsed
	XXX.XX:XX:XX			Process time elapsed including number of days, as soon as runtime exceeds 24 hours
IN_PV_X	XXXX.X XXXX.X ... mbar/hPa/Torr (X.XXEXX on VS-P sensors)			Pressure values of all connected sensors
IN_PV_T	XXXXdXXh			VACUU-SELECT operating time in days and hours.
IN_CFG	yXXXX			Selected application 0: VACUU-LAN 1: Pump down 2: Vacuum control 3: Boiling point automatic/detection 4: Custom application
	XyXXX			Coolant valve connected (0/1)
	XXyXX			Vent valve connected (0/1) 0: not connected 1: connected
	XXXyX			Automatic end reached (0/1)
	XXXXy			Remote control active (0/1)
		yXXXXXXXXXXXXXXXXXX		Selected application 0: VACUU-LAN 1: Pump down 2: Vacuum control 3: Boiling point automatic/detection 4: Custom application

Command	Response by selected communication mode			Description
	CVC 2000	CVC 3000	VACUU-SELECT	
IN_CFG		XyXXXXXXXXXXXXXXXXX		0..D: Language (hexadecimal) 0: German 1: English 2: French 3: Italian 4: Spanish 5: Turkish 6: Korean 7: Chinese 8: Portugese 9: Russian A: Polish B: Dutch C: Japanese D: Suomi
		XXyXXXXXXXXXXXXXXXXX		Pressure unit: 0: mbar 1: Torr 2: hPa
		XXXyXXXXXXXXXXXXXXXXX		Autostart off/on (0/1)
		XXXXyXXXXXXXXXXXXXXXXX		Beep on failure/warning (0/1)
		XXXXXyXXXXXXXXXXXXXXXXX		VARIO pump connected (0/1)
		XXXXXXyXXXXXXXXXXXXXXXXX		VMS-B module connected (0/1)
		XXXXXXXyXXXXXXXXXXXXX		Inlet valve connected (0/1)
		XXXXXXXXyXXXXXXXXXXXXX		Coolant valve connected (0/1)
		XXXXXXXXXXyXXXXXXXXXX		Vent valve connected (0/1)
		XXXXXXXXXXXXyXXXXXX		Digital I/O module connected as fault indicator interface (0/1)
		XXXXXXXXXXXXXyXXXXX		Level sensor connected (0/1)
		XXXXXXXXXXXXXXyXXX		Digital I/O module connected as remote module interface (0/1)
		XXXXXXXXXXXXXXXyXX		Number of the selected sensor Order of numbering as shown on chart view screen
		XXXXXXXXXXXXXXXyX		Number of connected sensors
		XXXXXXXXXXXXXXXy		Remote control active (0/1)
IN_ERR	yXXX			Failure on VARIO pump, inlet valve or VMS-B module (0/1)
	XyXX			Sensor overpressure or underrange warning (0/1)
	XXyX			Sensor failure (0/1)
	XXXy			Last command failed (0/1)
		yXXXXXXXXX		VARIO pump failure (0/1)
		XyXXXXXXXXX		Inlet valve failure (0/1)
		XXyXXXXXXXXX		Coolant valve failure (0/1)
		XXXyXXXXXXXXX		Vent valve failure (0/1)

Command	Response by selected communication mode			Description
	CVC 2000	CVC 3000	VACUU-SELECT	
IN_ERR		XXXXyXXXX		Sensor overpressure or underrange warning (0/1)
		XXXXXyXXX		Sensor failure (0/1)
		XXXXXXyXX		External failure on digital I/O module operating as fault indicator interface (0/1)
		XXXXXXXyX		Level sensor limit reached on collection flask (0/1)
		XXXXXXXXXy		Last command failed (0/1)
IN_SP_1y ¹⁾²⁾	XXXX mbar/hPa/Torr		XXXX.X mbar/hPa/Torr	Set-pressure value at process step y
	X.XXEXX mbar/hPa/Torr (on VS-P sensors)			
IN_SP_2y ¹⁾²⁾	XX.X Hz	XXX %		Maximum pump speed of process step y
IN_SP_3y ¹⁾²⁾	XXXX mbar/hPa/Torr		XXXX.X mbar/hPa/Torr	Switch-on pressure for VACUU·LAN or hysteresis for vacuum control of process step y
	X.XXEXX mbar/hPa/Torr (on VS-P sensors)			
IN_SP_4y ¹⁾²⁾	XX:XX h:m		XX:XX:XX h:m:s	Delay time for VACUU·LAN of process step y
IN_SP_5y ¹⁾²⁾	XXXX mbar/hPa/Torr		XXXX.X mbar/hPa/Torr	Maximum (e.g. control or hold vacuum) or minimum value (e.g. pump down) at process step y
	X.XXEXX mbar/hPa/Torr (on VS-P sensors)			
IN_SP_6y ¹⁾²⁾	XX:XX h:m		XX:XX:XX h:m:s	Set duration of process step y
IN_APP	X			Selected application's ID → <i>see chapter: 2.2 Determine the application ID</i>
IN_PROCESS	X			Selected process (A/B) Switchover only possible on SYNCHRO pumping units.
IN_STEP	X			Currently active process step of the selected application: 0: Process stopped 1..n: Process started
IN_VER	VACUU-SELECT VX.XX / VX.XX			Software version

4.4.2 Write commands

Command	Parameter	Description
OUT_MODE	0	VACUU·LAN
	1	Pump down
	2	Vacuum control
	3	Boiling point automatic/detection
OUT_APP	0..99	Select a default application. For the complete list of default applications → <i>see chapter: 2.3 List of applications</i>
	100..n	Select custom application. Get the application ID from its description in the controller
OUT_PROCESS	A	Select process A
	B	Select process B (only available on SYNCHRO pumping units)
OUT_STEP	<i>no parameters</i>	Go to the application's next process step. Only available, when jumping to the next step is enabled
OUT_CFG	yXXX	0..D: Select language (hexadecimal) See list from command „IN_CFG”
	XyXX	Select pressure unit See list from command „IN_CFG”
	XXyX	Switch off/on autostart (0/1)
	XXXy	Switch off/on beep on failure/warning (0/1)
OUT_SP_1y ^{(1),(3),(4)}	XXXX or XXXX.X X.XXEXX (on VS-P sensors)	Change the set-pressure of process step y without use the vent valve for vacuum control
OUT_SP_Xy ^{(1),(3),(4)}		Change the set-pressure of process step y with one-time ventilation to the new set pressure, if necessary
OUT_SP_Vy ^{(1),(3),(4)}		Change the set-pressure of process step y and permanently use the vent valve for vacuum control
OUT_SP_2y ⁽³⁾	XX.X	Change maximum pump speed of process step y. Values given in Hz (Communication mode CVC 2000) or % (CVC 3000 or VACUU·SELECT)
	XXX	
OUT_SP_3y ^{(1),(3)}	XXXX or XXXX.X X.XXEXX (on VS-P sensors)	Change switch-on pressure for VACUU·LAN or hysteresis for vacuum control of process step y
OUT_SP_4y ⁽³⁾	XX:XX or XX:XX:XX	Change delay time for VACUU·LAN of process step y
OUT_SP_5y ^{(1),(3)}	XXXX or XXXX.X X.XXEXX (on VS-P sensors)	Change maximum (e.g. control or hold vacuum) or minimum value (e.g. pump down) of process step y
OUT_SP_6y ⁽³⁾	XX:XX or XX:XX:XX	Change set duration of process step y
OUT_SENSOR	1..8	Select active sensor for control. Order of numbering as shown in chart view screen.
OUT_VENT ⁽⁴⁾	0	Close vent valve
	1	Open vent valve
	2	Vent to atmospheric pressure (ATM) or max. 1060 mbar
REMOTE	0	Exit remote control
	1	Enable remote control. Local operation disabled and process screen active.
	1y	Optional parameter y: 0: Go to process screen 1: Go to chart view screen

Command	Parameter	Description
REMOTE	2 2y	Enable remote control. Local operation disabled, but exit is possible by ON/OFF button. Optional parameter y: 0: Go to process screen 1: Go to chart view screen
START	<i>no parameters</i> or 1	Start process
STOP	<i>no parameters</i> or 0 1	Stop process and acknowledge failures/warnings Stop process
ECHO	0 1	Disable Echo Enable Echo. Write commands will be responded
CVC	2 3 4	Communication mode CVC 2000 Communication mode CVC 3000 Communication mode VACUU·SELECT

1) Details subject to device default setting for pressure unit.

2) Parameter y is optional. If y is not indicated the parameter value is selected by the current process step of the running application. If no application was started, the first process step is read from.

3) Parameter y is optional. If y is not indicated the parameter value is applied to the current process step of the selected application.

4) The basic settings regarding use of the venting valve are temporarily overwritten (until the end of the process currently running).

5) Any process that may be running is stopped when the command is implemented.

4.5 Sample application

Vacuum control

The following sequence shows vacuum control to a pressure setpoint of 12.3 mbar, by way of example.

Input the basic settings

Command	Response	Description
ECHO 1<CR>	1<CR><LF>	Activate Echo mode
CVC 4<CR>	4<CR><LF>	VACUU·SELECT communication mode

Activate remote control

Command	Response	Description
REMOTE 1<CR>	1<CR><LF>	Activate remote control, device locally locked, jump to <i>Process screen</i>
<i>or</i>		
REMOTE 2<CR>	2<CR><LF>	Activate remote control, device can be locally unlocked, jump to <i>Process screen</i>
<i>or</i>		
REMOTE 11<CR>	11<CR><LF>	Activate remote control, device locally locked, jump to <i>Pressure graph</i>

Select "vacuum control" application (ID=6)

Command	Response	Description
OUT_APP 6<CR>	6<CR><LF>	Select application

Specify pressure setpoint

Command	Response	Description
OUT_SP_1 12.3<CR>	0012.3<CR><LF>	Adjust pressure setpoint to 12.3 mbar

Start process

Command	Response	Description
START<CR>	1<CR><LF>	Start process

Stop process

Command	Response	Description
STOP<CR>	0<CR><LF>	Stop process

Deactivate remote control

Command	Response	Description
REMOTE 0<CR>	0<CR><LF>	Deactivate remote control

While the process is running, the following Modbus registers can, for example, serve to monitor the process flow:

Command	Response	Description
IN_PV_1<CR>	0123.4 mbar<CR><LF>	Actual pressure of sensor
IN_PV_3<CR>	00:12:34 h:m:s<CR><LF>	Process runtime

5 Index

A		
Abbreviations	6	
Application IDs Standard applications	10	
C		
Commonly used commands, RS-232	35	
Common model Modbus register mappings	21	
Context menu, serial port	30	
Control model	22	
D		
Device locked	23	
E		
Ethernet	5	
Ethernet connection	13	
Example, Modbus TCP	27	
Example, RS-232	41	
F		
Floating-point representation	18	
G		
General communication settings	30	
I		
Integer representation	18	
Interface commands	34	
M		
Modbus data types	17	
Modbus register mapping	21	
Modbus remote control full access	16	
Modbus TCP default settings	15	
N		
NaN values	17	
Network/IP settings	14	
Null modem cable	29	
P		
Personnel qualification	7	
Plug allocation (RS-232)	29	
Process flow	42	
Process parameter deactivation	19, 32	
Process step ID	11	
Process step identification number	11	
Process step IDs	11	
R		
Read commands, RS-232	36	
Representation/setting of pressure values	18	
Representation/setting of special values	19, 32	
Responsibility matrix	7	
RS-232 connection	29	
S		
Select application via ID	9	
Serial port settings	31	
Serial port with full access	31	
Settings Modbus remote control	15	
Show application ID on the display	9	
Start/end remote control	20, 32	
Supported function codes	17	
Supported software version	6	
U		
Unlocking by ON/OFF	23	
USB adapter/RS-232	29	
V		
VACUUBRAND standard applications	9	
View of locked controller	20, 33	
W		
Write commands, RS-232	39	
Write commands; RS-232	35	



Technology for Vacuum
Systems

Manufacturer:

VACUUBRAND GMBH + CO KG
Alfred-Zippe-Str. 4
97877 Wertheim
GERMANY

Phone:

Head office: +49 9342 808-0

Sales: +49 9342 808-5550

Service: +49 9342 808-5660

Fax: +49 9342 808-5555

Email: info@vacuubrand.com

Web: www.vacuubrand.com