

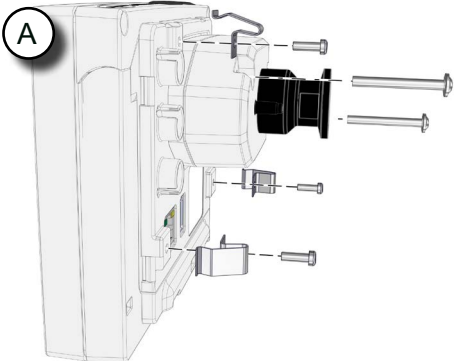
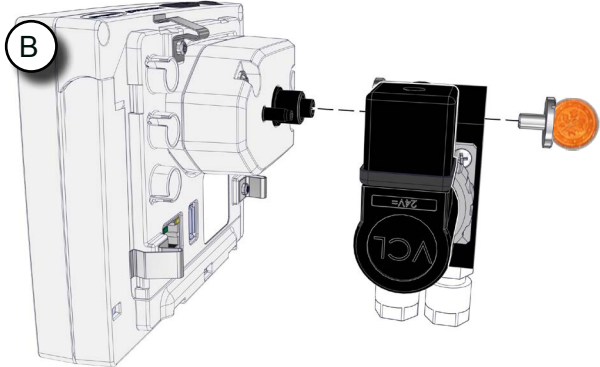
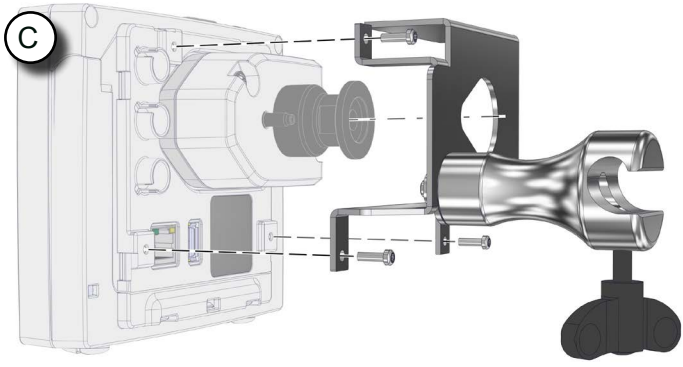
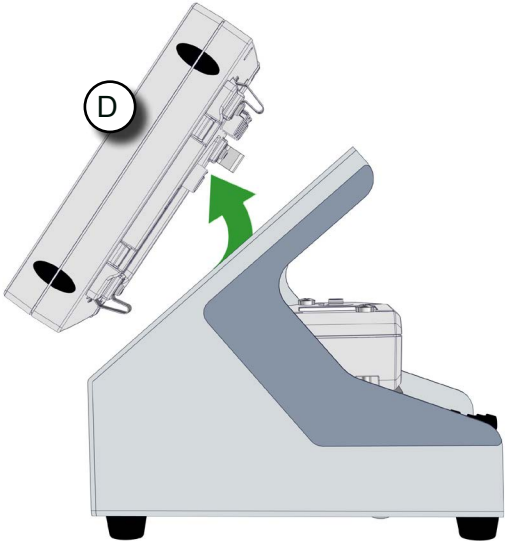
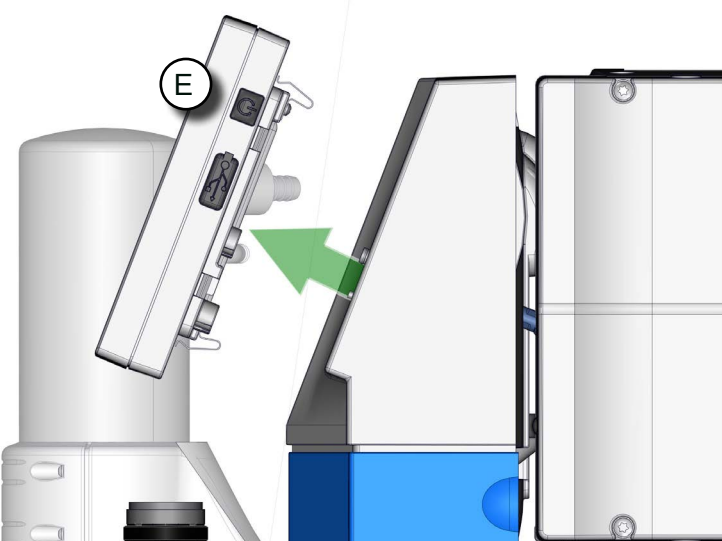


NOTE

This installation manual describes how to disassemble the components of a VACUU·SELECT and VACUU·SELECT Complete so that defective parts can be disposed of correctly and replaced with spare parts.

⇒ In addition, please refer to the safety information in the controller manual.

Spare parts valid for the following controller types (examples)

	<table border="1"> <thead> <tr> <th>Controller</th> <th>Order no.</th> </tr> </thead> <tbody> <tr> <td>A VACUU·SELECT with sensor</td> <td>20700000</td> </tr> <tr> <td>B VACUU·SELECT Complete built-in version</td> <td>20700060</td> </tr> <tr> <td>VACUU·SELECT built-in version</td> <td>20700061</td> </tr> <tr> <td>C VACUU·SELECT Complete lab scaffold version</td> <td>20700080</td> </tr> <tr> <td>VACUU·SELECT lab scaffold version</td> <td></td> </tr> <tr> <td>D VACUU·SELECT Complete benchtop version</td> <td>20700070</td> </tr> <tr> <td>E VACUU·SELECT operating panel</td> <td>20635118</td> </tr> </tbody> </table>	Controller	Order no.	A VACUU·SELECT with sensor	20700000	B VACUU·SELECT Complete built-in version	20700060	VACUU·SELECT built-in version	20700061	C VACUU·SELECT Complete lab scaffold version	20700080	VACUU·SELECT lab scaffold version		D VACUU·SELECT Complete benchtop version	20700070	E VACUU·SELECT operating panel	20635118
Controller	Order no.																
A VACUU·SELECT with sensor	20700000																
B VACUU·SELECT Complete built-in version	20700060																
VACUU·SELECT built-in version	20700061																
C VACUU·SELECT Complete lab scaffold version	20700080																
VACUU·SELECT lab scaffold version																	
D VACUU·SELECT Complete benchtop version	20700070																
E VACUU·SELECT operating panel	20635118																
																	
																	

Spare parts

Spare parts

VACUU·SELECT front

VACUU·SELECT rear part

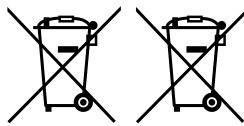
VACUU·SELECT rear part with main circuit board

VACUU·SELECT main circuit board

Description of safety symbols



Disconnect power plug.



Electric/electronic devices and batteries must not be disposed of in the domestic waste at the end of their service life.



Electrostatically sensitive components ESD.

Target group and personnel qualification

Qualified electrician

Person who, due to their technical training and knowledge of electrical and electronic equipment, can assess the work assigned to them and recognize any potential hazards.

Person with electrotechnical expertise

Person who has been sufficiently trained by a qualified electrician with regard to the tasks assigned to them, the potential hazards of improper handling as well as the necessary protection equipment and protective measures that may be required.

Description of action symbols



Steps



Position marker



Direction of movement



Intermediate result or final result



Direction of rotation

Preparation: materials and tools



-> Beispiele, nicht im Lieferumfang enthalten / Example items, not part of delivery / Exemples, non fournis

- | | |
|---|--|
| 1 | ESD tweezers |
| 2 | Grounding armband |
| 3 | ESD Torx screwdriver with torque of TX10 |
| 4 | Phillips screwdriver, size 2 |
| 5 | Flat-head screwdriver, size 5.5 |
| 6 | VACUU·SELECT controller |
| 7 | Suitable coin (optional) |
| 8 | Protective gloves (optional) |

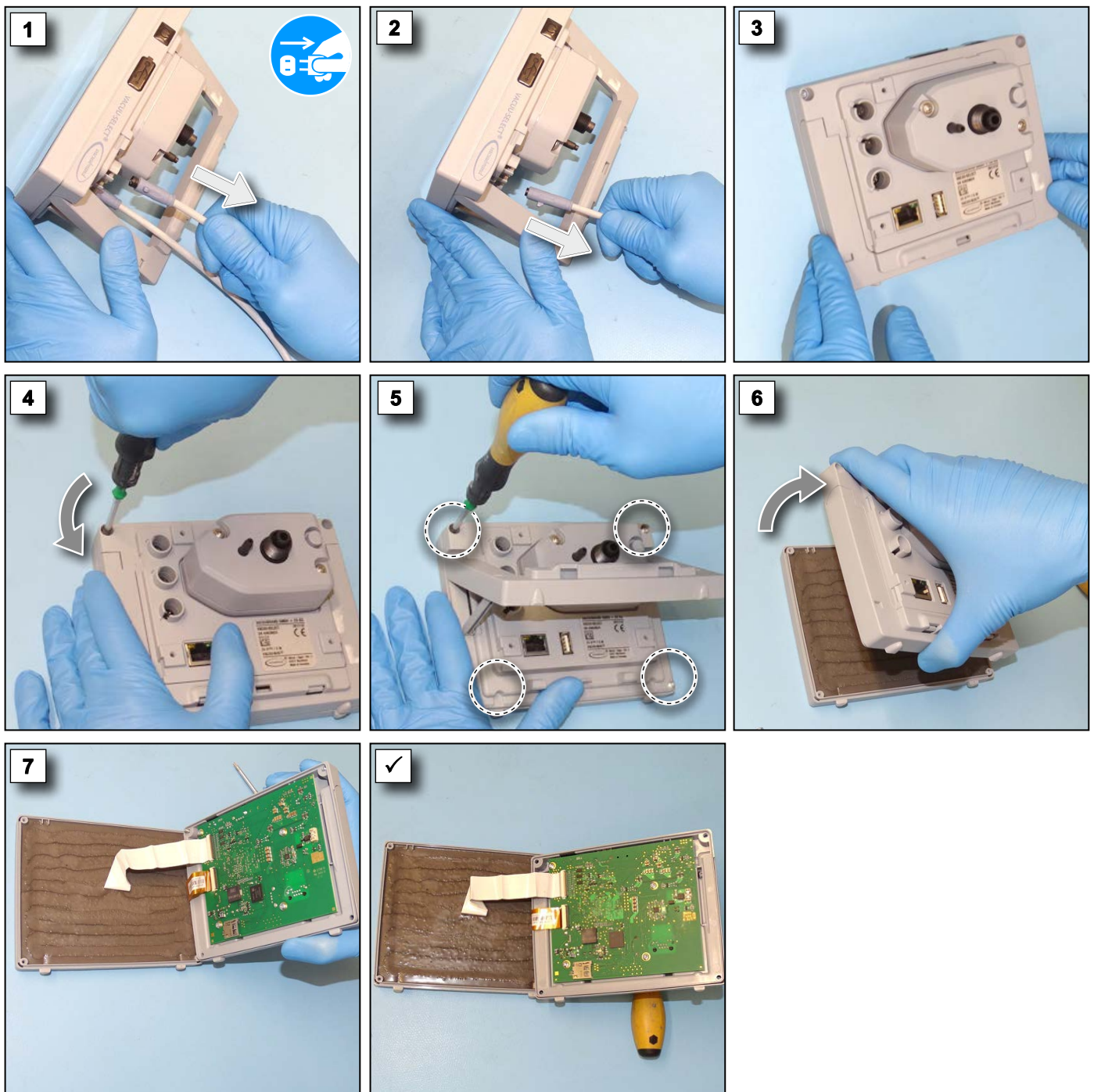
NOTE

Ensure that work is performed correctly in order to prevent damage from occurring.

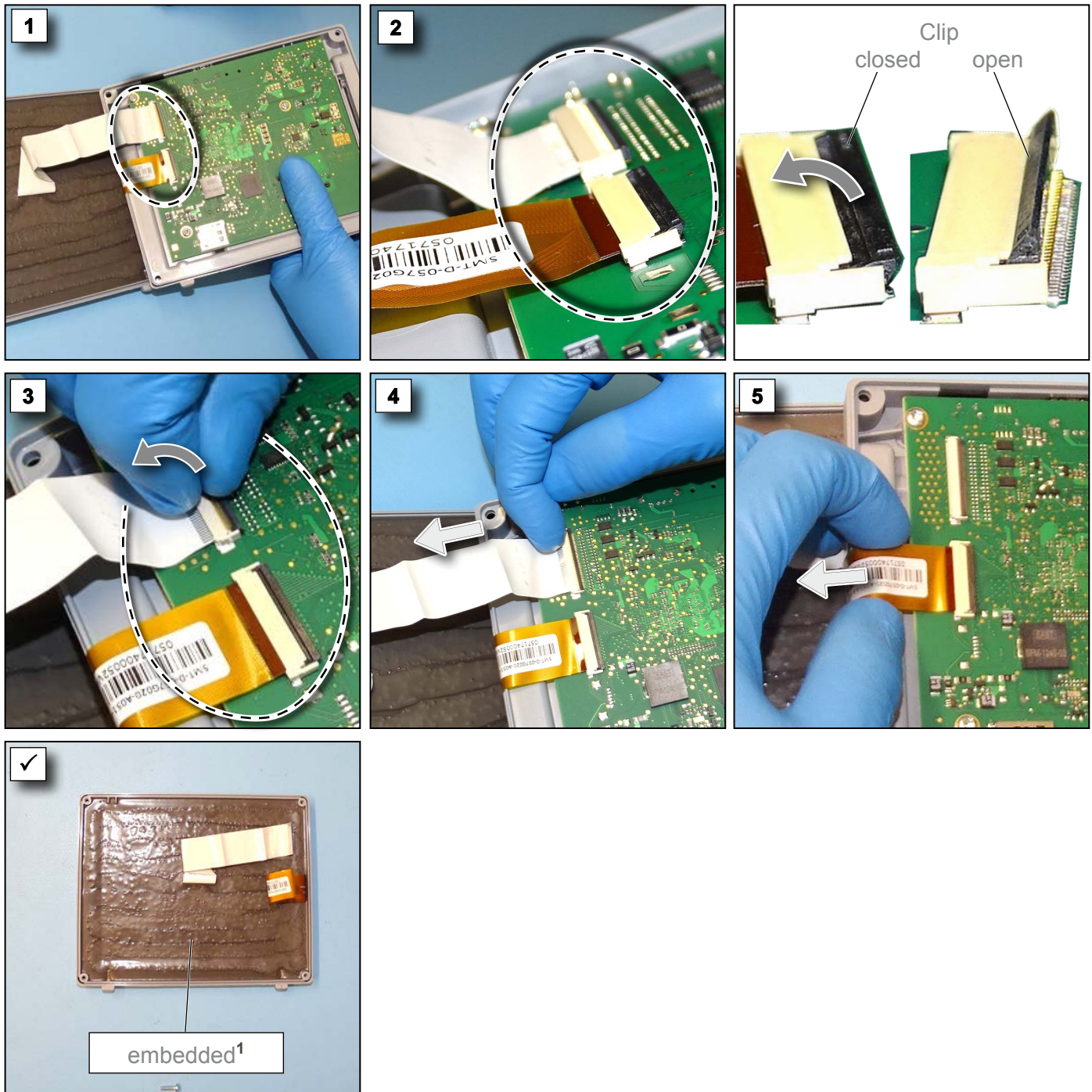


- ⇒ Only have work on electrical and electronic equipment performed by a qualified electrician or at least by a person with electrotechnical expertise.
- ⇒ Ensure ESD safeguards when working with the circuit board.

Disassemble VACUU-SELECT

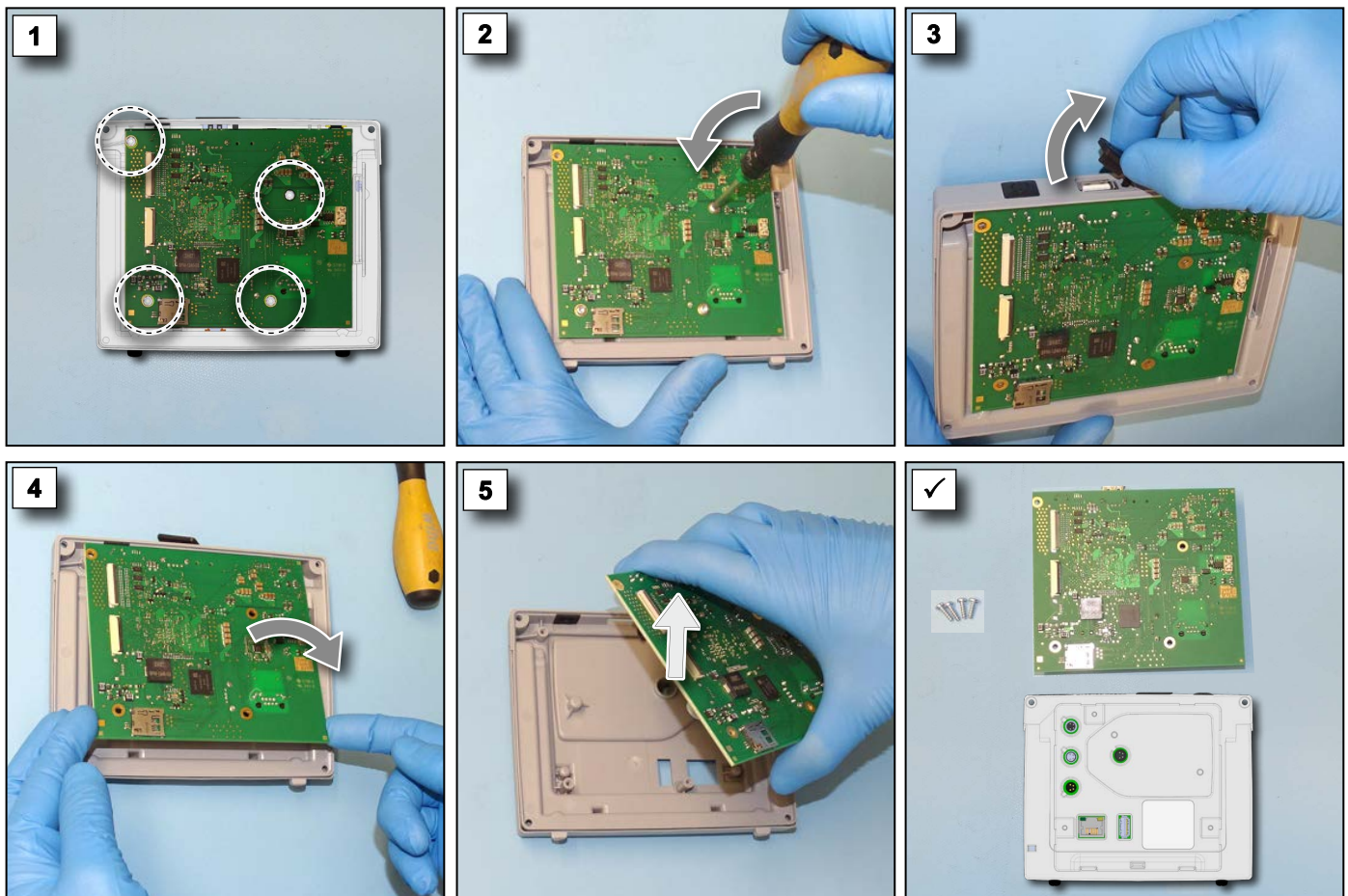


Disconnect flat ribbon cable



1 -> Display can no longer be disassembled

Remove main circuit board



NOTE

Electronic components must not be disposed of in domestic waste at the end of their service life. Incorrect disposal of electronic components can cause environmental pollution.

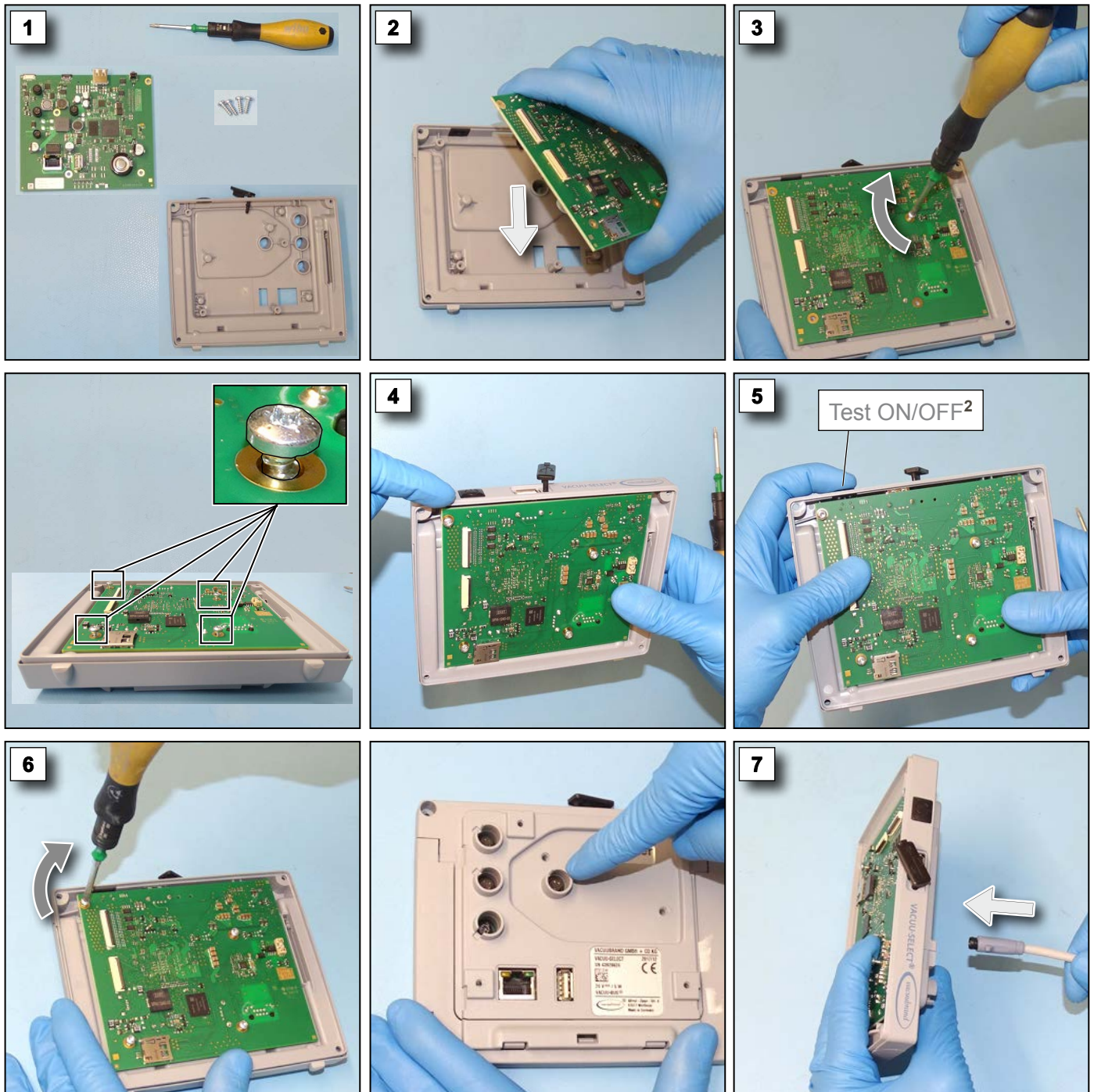
Used electronic devices contain harmful substances that can cause damage to the environment or human health. Disused electrical devices also contain valuable raw materials, which can be recovered for reuse if the device is disposed of correctly within the recycling process.

End users are legally obliged to take used electric and electronic devices to a licensed collection point.

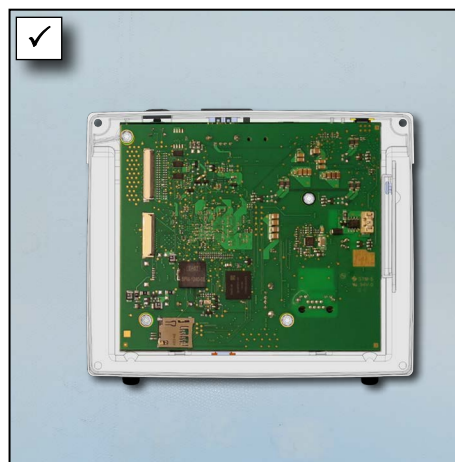
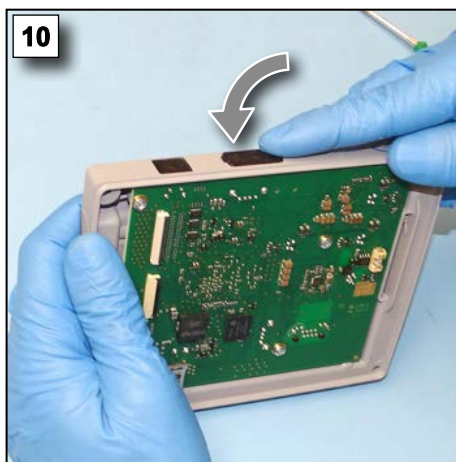
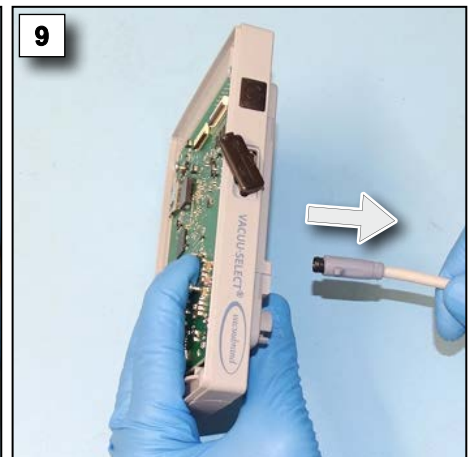
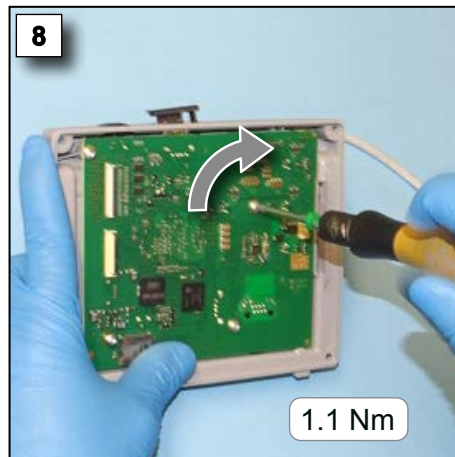
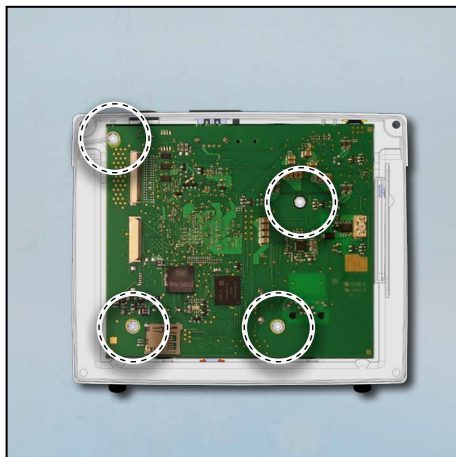
- ⇒ Correctly dispose of all electronic scrap and electronic components at the end of their service life.
- ⇒ Observe the national regulations regarding disposal and environmental protection.



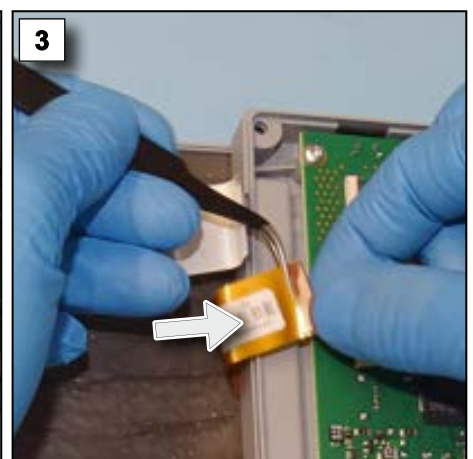
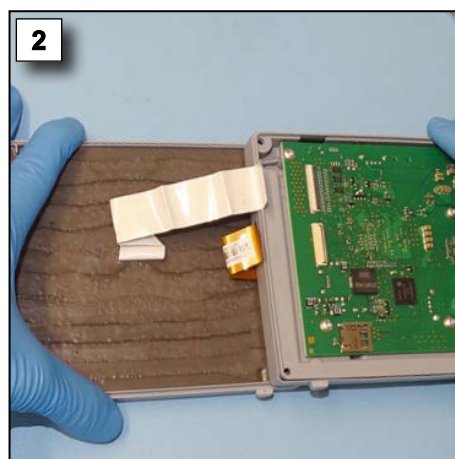
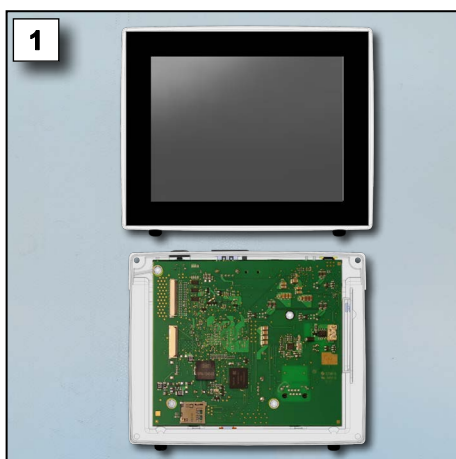
Install main circuit board

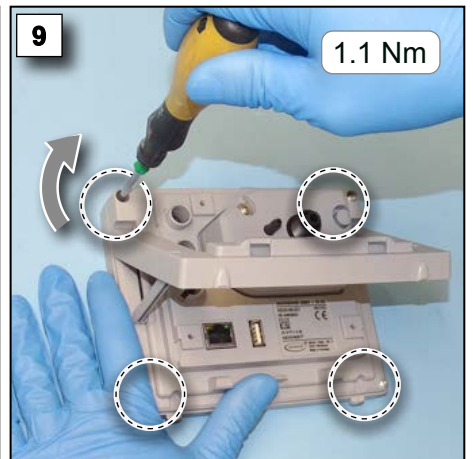
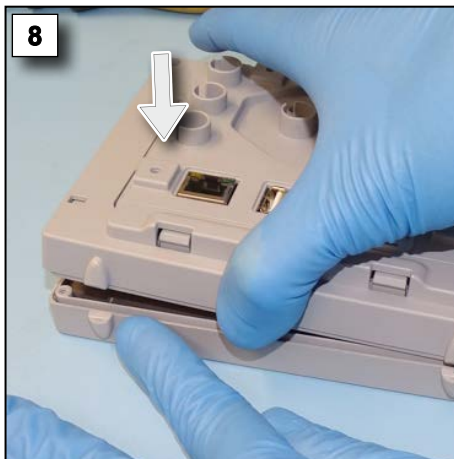
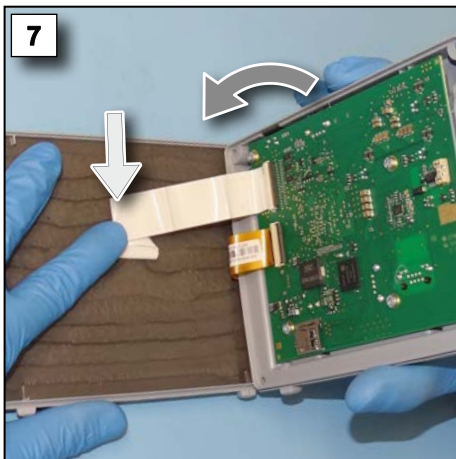
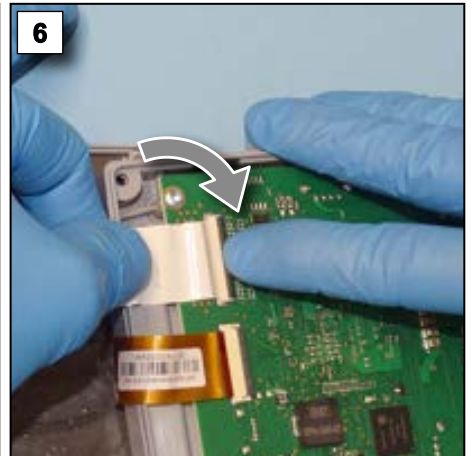
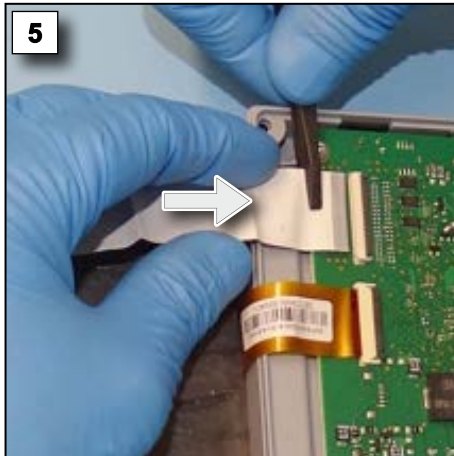
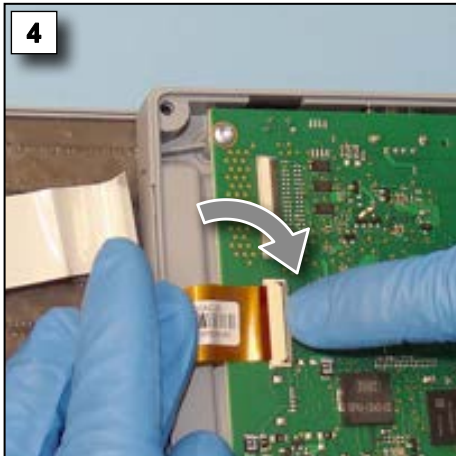


² -> A click must be audible when pressing the button.



Install VACUU-SELECT





Original instructions Keep for further use!

This manual is only to be used and distributed in its complete and original form. It is strictly the user's responsibility to carefully check the validity of this manual with respect to the product.

Manufacturer:

VACUUBRAND GMBH + CO KG
Alfred-Zippe-Str. 4
97877 Wertheim
GERMANY

Phone:

Head office: +49 9342 808-0

Sales: +49 9342 808-5550

Service: +49 9342 808-5660

Fax: +49 9342 808-5555

Email: info@vacuubrand.com

Web: www.vacuubrand.com